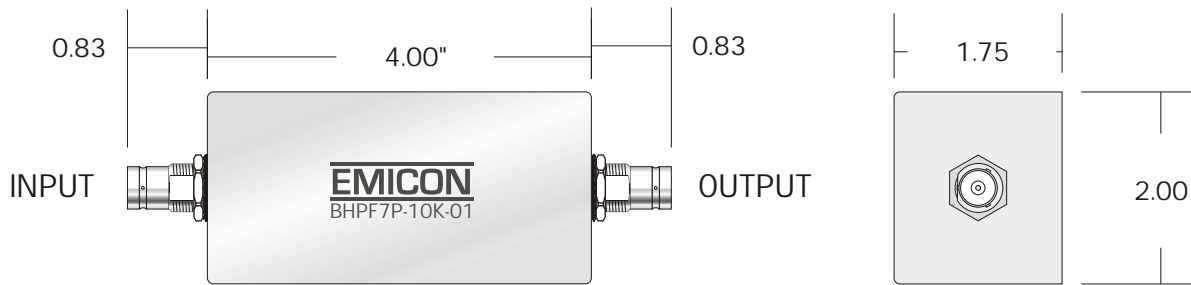


BLPF7P-10K-01

LOW PASS FILTER

REV	DATE	DESCRIPTION



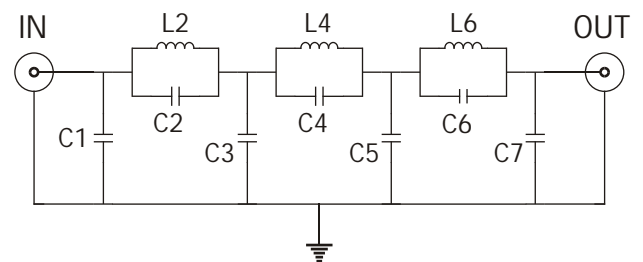
BNC Female Connectors

OUTLINE DRAWING

Cut-off Frequency: 10 KHz
 Source/Load Impedance: 50 Ohms
 Max Current: 12 A
 Linear Signal Current: 4.6 mA

ATTENUATION	
FREQUENCY	TYPICAL
9.5 KHz	1 dB
10 KHz	3 dB
10.65 KHz	10 dB
11.2 KHz	20 dB
11.75 KHz	30 dB
12.35 KHz	40 dB
12.85 KHz	50 dB
13.15 KHz	60 dB
13.35 KHz	> 60 dB

SPECIFICATIONS



FUNCTIONAL DIAGRAM