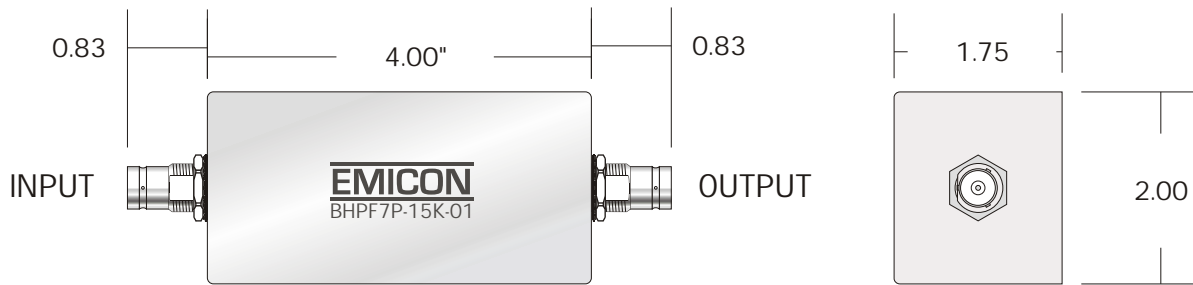


# BLPF7P-15K-01

LOW PASS FILTER

REV	DATE	DESCRIPTION



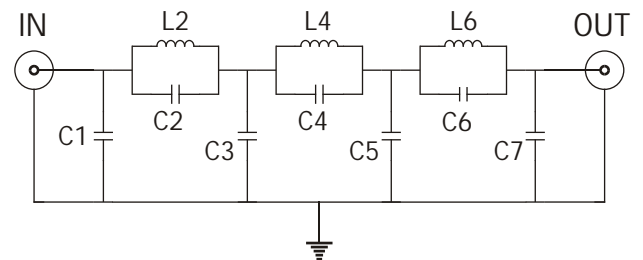
BNC Female Connectors

## OUTLINE DRAWING

Cut-off Frequency: 15 KHz  
 Source/Load Impedance: 50 Ohms  
 Max Current: 12 A  
 Linear Signal Current: 5.4 mA

ATTENUATION	
FREQUENCY	TYPICAL
14.25 KHz	1 dB
15 KHz	3 dB
16.1 KHz	10 dB
16.9 KHz	20 dB
17.8 KHz	30 dB
18.8 KHz	40 dB
19.6 KHz	50 dB
20.25 KHz	60 dB
20.6 KHz	> 60 dB

## SPECIFICATIONS



## FUNCTIONAL DIAGRAM