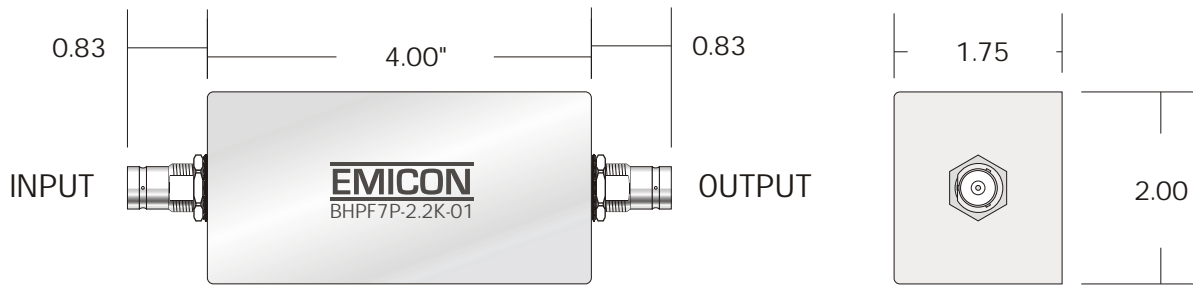


BLPF7P-2.2K-01

LOW PASS FILTER

REV	DATE	DESCRIPTION



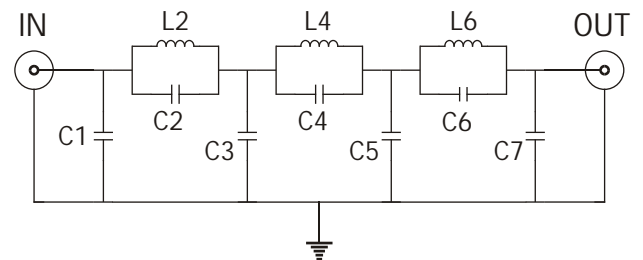
BNC Female Connectors

OUTLINE DRAWING

Cut-off Frequency: 2.2 KHz
 Source/Load Impedance: 50 Ohms
 Max Current: 12 A
 Linear Signal Current: 2 mA

ATTENUATION	
FREQUENCY	TYPICAL
2.09 KHz	1 dB
2.2 KHz	3 dB
2.33 KHz	10 dB
2.44 KHz	20 dB
2.56 KHz	30 dB
2.68 KHz	40 dB
2.78 KHz	50 dB
2.85 KHz	60 dB
2.89 KHz	> 60 dB

SPECIFICATIONS



FUNCTIONAL DIAGRAM