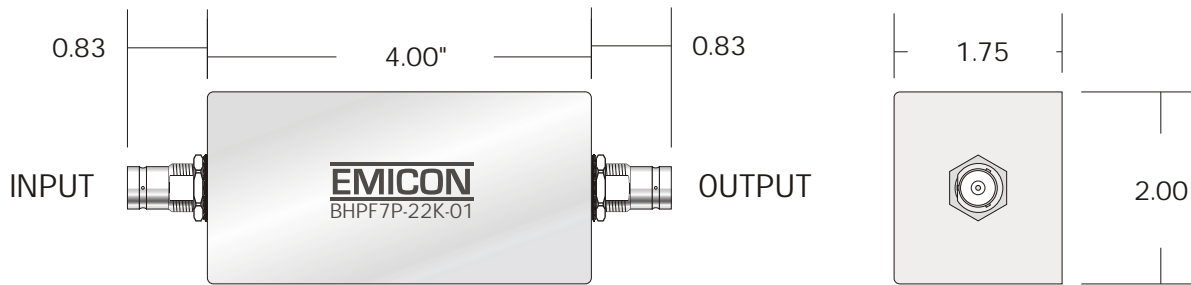


BLPF7P-22K-01

LOW PASS FILTER

REV	DATE	DESCRIPTION



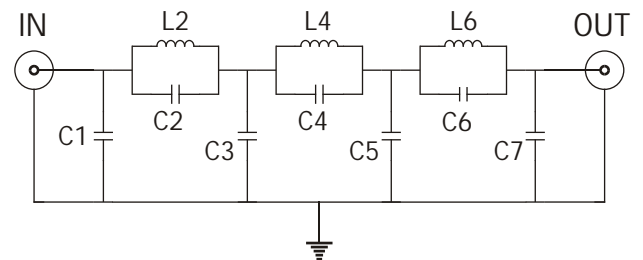
BNC Female Connectors

OUTLINE DRAWING

Cut-off Frequency: 22 KHz
 Source/Load Impedance: 50 Ohms
 Max Current: 12 A
 Linear Signal Current: 6.9 mA

ATTENUATION	
FREQUENCY	TYPICAL
20.9 KHz	1 dB
22 KHz	3 dB
23.8 KHz	10 dB
25 KHz	20 dB
26.4 KHz	30 dB
27.6 KHz	40 dB
28.6 KHz	50 dB
29.5 KHz	60 dB
29.9 KHz	> 60 dB

SPECIFICATIONS



FUNCTIONAL DIAGRAM