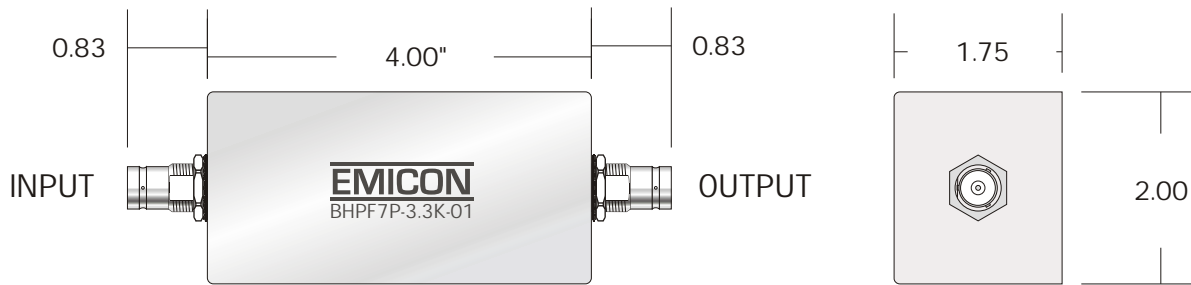


BLPF7P-3.3K-01

LOW PASS FILTER

REV	DATE	DESCRIPTION
A	03-31-09	Diagram- Common ground and Connectors shown



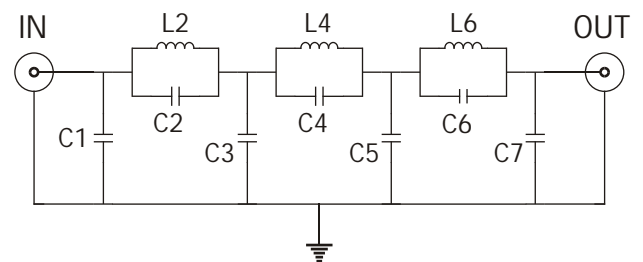
BNC Female Connectors

OUTLINE DRAWING

Cut-off Frequency: 3.3 KHz
 Source/Load Impedance: 50 Ohms
 Max Current: 12 A
 Linear Signal Current: 2.6 mA

ATTENUATION	
FREQUENCY	TYPICAL
3.2 KHz	1 dB
3.3 KHz	3 dB
3.6 KHz	10 dB
3.8 KHz	20 dB
4.0 KHz	30 dB
4.2 KHz	40 dB
4.5 KHz	60 dB
5.0 KHz	> 60 dB

SPECIFICATIONS



FUNCTIONAL DIAGRAM