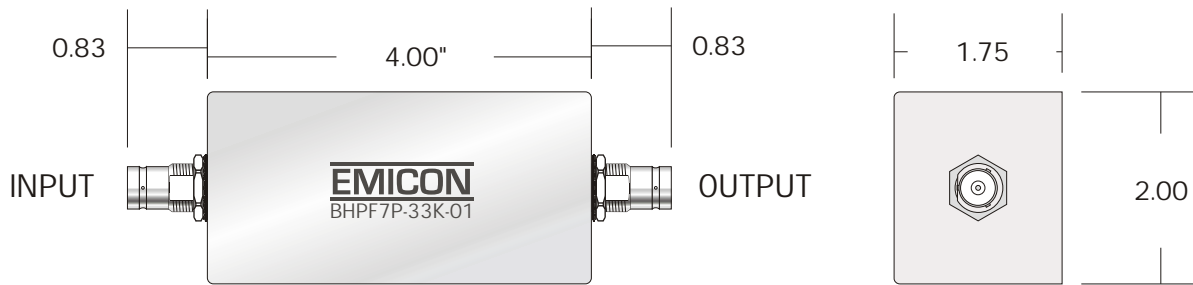


# BLPF7P-33K-01

LOW PASS FILTER

REV	DATE	DESCRIPTION



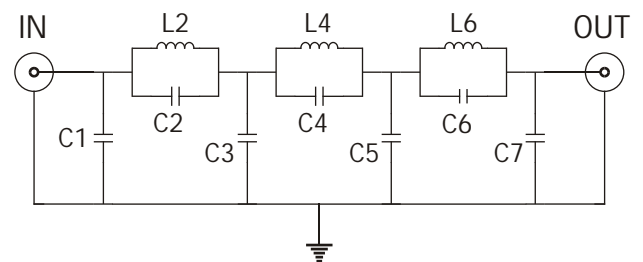
BNC Female Connectors

## OUTLINE DRAWING

Cut-off Frequency: 33 KHz  
 Source/Load Impedance: 50 Ohms  
 Max Current: 12 A  
 Linear Signal Current: 8.3 mA

ATTENUATION	
FREQUENCY	TYPICAL
31.4 KHz	1 dB
33 KHz	3 dB
35.4 KHz	10 dB
37.1 KHz	20 dB
39.1 KHz	30 dB
41.2 KHz	40 dB
43.1 KHz	50 dB
44.4 KHz	60 dB
45.2 KHz	> 60 dB

## SPECIFICATIONS



## FUNCTIONAL DIAGRAM