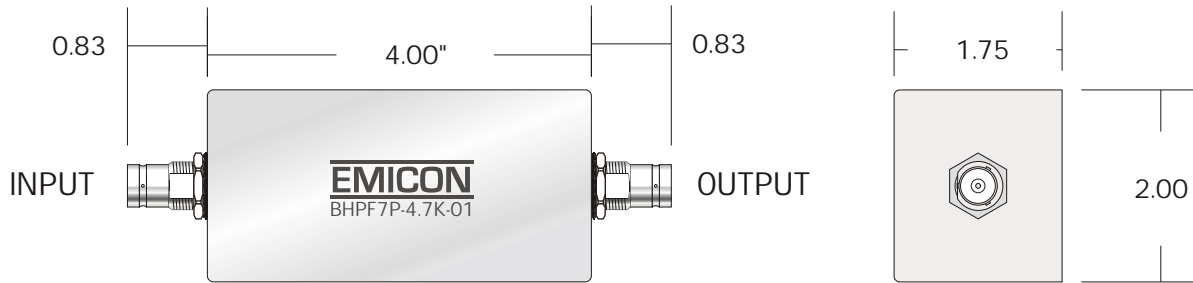


# BLPF7P-4.7K-01

LOW PASS FILTER

REV	DATE	DESCRIPTION



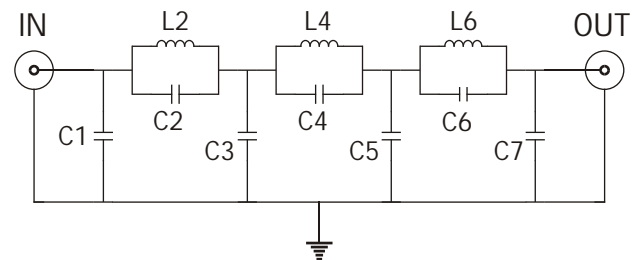
BNC Female Connectors

## OUTLINE DRAWING

Cut-off Frequency:	4.7 KHz
Source/Load Impedance:	50 Ohms
Max Current:	12 A
Linear Signal Current:	3 mA

ATTENUATION	
FREQUENCY	TYPICAL
4.47 KHz	1 dB
4.7 KHz	3 dB
5.02 KHz	10 dB
5.26 KHz	20 dB
5.54 KHz	30 dB
5.78 KHz	40 dB
5.98 KHz	50 dB
6.13 KHz	60 dB
6.3 KHz	> 60 dB

## SPECIFICATIONS



## FUNCTIONAL DIAGRAM