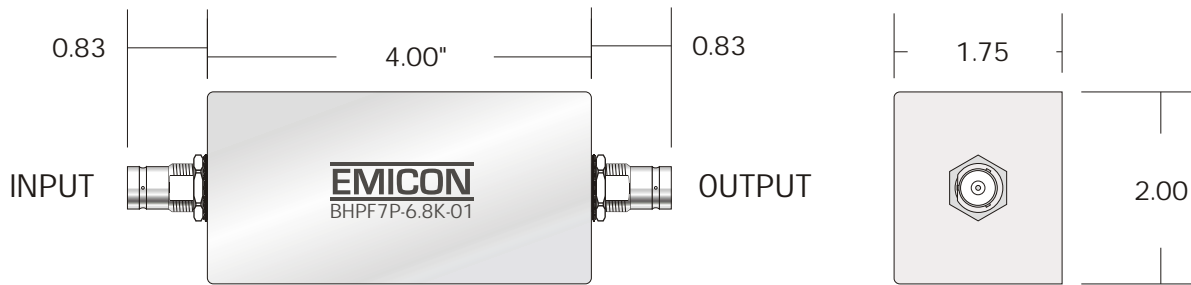


BLPF7P-6.8K-01

LOW PASS FILTER

REV	DATE	DESCRIPTION



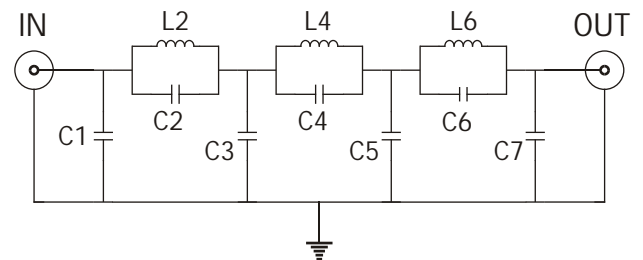
BNC Female Connectors

OUTLINE DRAWING

Cut-off Frequency: 6.8 KHz
 Source/Load Impedance: 50 Ohms
 Max Current: 12 A
 Linear Signal Current: 3.7 mA

ATTENUATION	
FREQUENCY	TYPICAL
6.46 KHz	1 dB
6.8 KHz	3 dB
7.2 KHz	10 dB
7.55 KHz	20 dB
7.95 KHz	30 dB
8.3 KHz	40 dB
8.6 KHz	50 dB
8.85 KHz	60 dB
9.1 KHz	> 60 dB

SPECIFICATIONS



FUNCTIONAL DIAGRAM