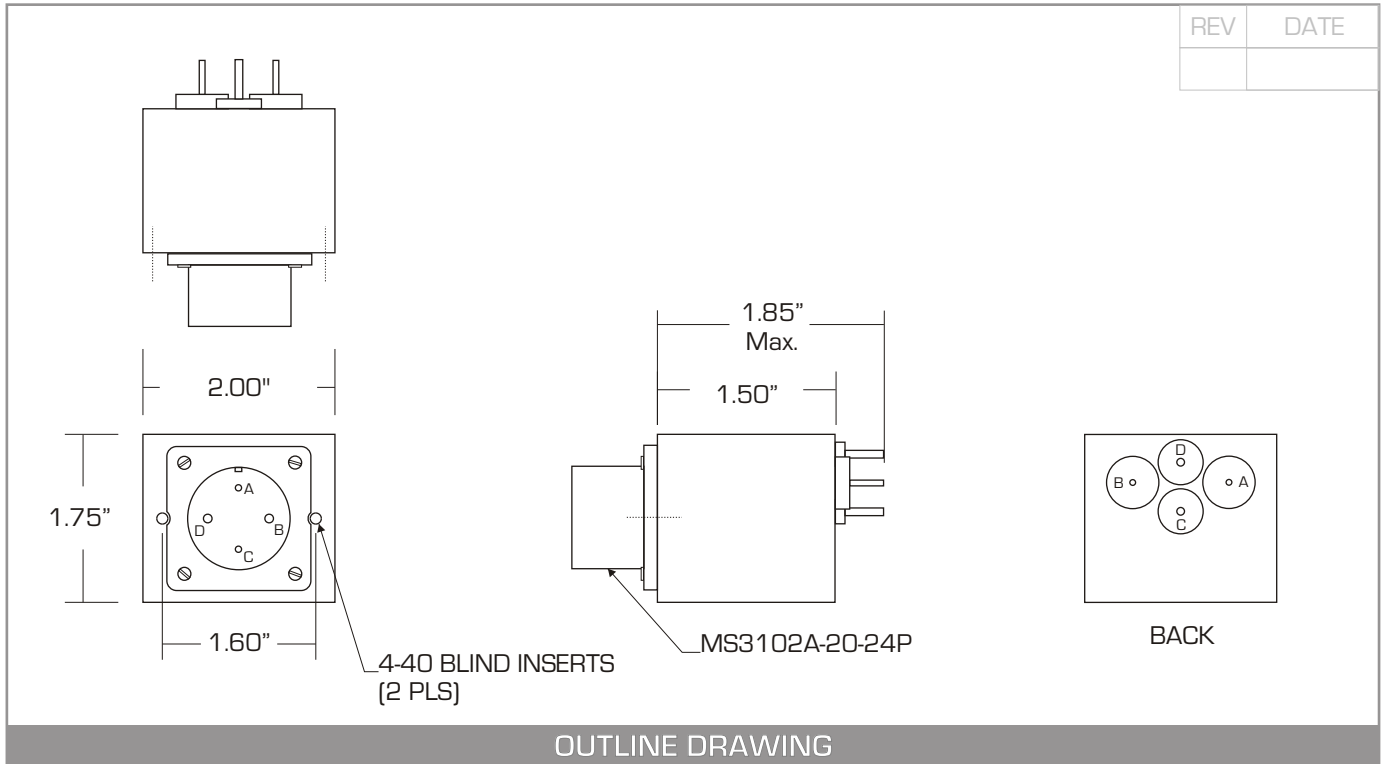


**LOW DC RESISTANCE**



**EMICON P/N:** **PLF-292**

**LINE CURRENT:** 30 AMPS RMS

**LINE VOLTAGE:** UP TO +32 VDC

**DCR:** 0.008 OHMS MAX.

ATTENUATION	
Frequency	Minimum
30 KHz	33 dB
150 KHz	35 dB
300 KHz	40 dB
1 MHz	52 dB
10 MHz	80 dB
100 MHz to 1GHz	75 dB

**SPECIFICATIONS**

